

# ARTISTS in ACTION

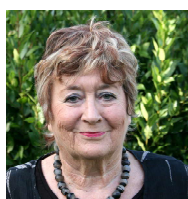
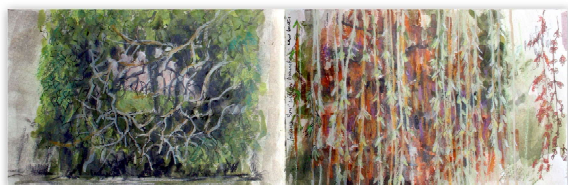
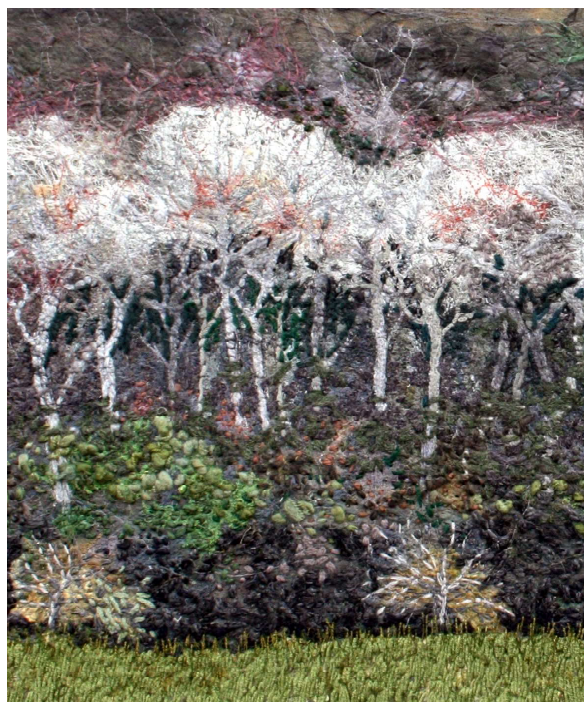
## Jan Beaney

Landscape in all its forms has been a major interest for several decades. Fleeting changes of light and subtle nuances continually intrigue and challenge her to create work where elements have been simplified or exaggerated whilst still retaining its entity.

The aim is to create a simple image that captures the essence of the place along with accumulated memories and emotions experienced at that time.

She prefers to work in themes and keeps sketchbooks to inform her thought processes. This enables her to work through the first impressions endeavouring to progress to more subtle, evocative responses to unexpected aspects. Her initial reactions can take some time to develop allowing time to evaluate her responses and for memories to strengthen or fade. This in turn helps the selection and compilation process of exaggeration and understatement to formalise a design.

Jan's intention is to create compositions that are a synthesis of observational impressions rather than a literal image.



[www.doubletrouble-ent.com](http://www.doubletrouble-ent.com)